

**SANTA CRUZ CITY SCHOOLS DISTRICT
SPECIAL MEETING FOR THE ELEMENTARY AND SECONDARY DISTRICTS
WEDNESDAY, APRIL 10
8:30 P.M. OR AT THE END OF THE REGULAR MEETING**

**COMMUNITY MEMBERS CAN PARTICIPATE REMOTELY VIA ZOOM OR
IN PERSON AT THE COUNTY OFFICE OF EDUCATION, BOARD ROOM
400 ENCINAL STREET, SANTA CRUZ, CA.
MASKS ARE STRONGLY ENCOURAGED**

[Click on this link to join meeting.](#)

Meeting ID: 813 0705 8448
Meeting Password: SCCS

**POSTED
DATE:
TIME:
LOCATION:
EMPLOYEE:**

This meeting is being conducted by teleconference at the following locations:

[Wyndham Grand Orlando Resort Bonnet Creek, 14651 Chelonia Parkway, Orlando, FL, 32821 by Board Member Kevin Grossman]. Each teleconference location is open to the public and any member of the public has an opportunity to address the School Board from a teleconference location in the same manner as if that person attended the regular meeting location. The School Board will control the conduct of the meeting and determine the appropriate order and time limitations on public comments from teleconference locations.

AGENDA

	Item	Purpose / Support
	Agenda	
1.	Convene Open Session	8:05 p.m.
1.1	Welcome	
1.2	Agenda Changes, Additions or Deletions & Announcements	
1.3	AB 2449 Remote Attendance	
1.4	Teleconference Notice	
1.5	Public Comments	<i>For presentations of matters not on the Agenda. 3 minutes for individuals; 15 minutes per subject. Note to Members of the Public: Thank you for taking the time to attend this meeting. Santa Cruz City School Board Members appreciate your presence and your comments regarding items not on the agenda are valued. Per Santa Cruz City Schools Board Bylaw protocols, Trustees will not comment on Public Comments during this time.</i>
2.	General Public Business	
2.1	Items to Be Transacted and/or Discussed	
2.1.1	New Business: Miyamoto International Change Order #1 to Feasibility Study	<i>Recommendation: Approve Miyamoto International Change Order #1 to Feasibility Study.</i>
3.	Adjournment	

The board book for this meeting, including this agenda and back-up materials, may be viewed or downloaded online: http://sccs.net/board_of_education or may be viewed at the District Office, 133 Mission St. Ste. 100, Santa Cruz, CA 95060.

**SANTA CRUZ CITY SCHOOLS DISTRICT
SPECIAL MEETING FOR THE ELEMENTARY AND SECONDARY DISTRICTS
WEDNESDAY, APRIL 10
8:30 P.M. OR AT THE END OF THE REGULAR MEETING**

Public Participation:

All persons are encouraged to attend and, when appropriate, to participate in meetings of the Santa Cruz City Schools Board of Education. If you wish to speak to an item on the agenda, please be present at the beginning of the meeting as any item, upon motion, may be moved to the beginning of the agenda. Consideration of all matters is conducted in open session except those relating to litigation, personnel and employee negotiations, which, by law, may be considered in closed session.

Translation Requests:

Spanish language translation is available on an as-needed basis. Please make advance arrangements with Wednesday Manners by telephone at (831) 429-3410 extension 48220.

Las Solicitudes de Traducción:

Traducciones del inglés al español y del español al inglés están disponibles en las sesiones de la mesa directiva. Por favor haga arreglos por anticipado con Wednesday Manners por teléfono al número (831) 429-3410 x48220.

Board Meeting Information

1. The Study Session Meeting on April 24, 2024, 6:00 p.m., at the Santa Cruz County Office of Education, and will be broadcast to the public remotely via Zoom.
2. The Regular Board Meeting on May 15, 2024, 6:30 p.m., at the Santa Cruz County Office of Education, and will be broadcast to the public remotely via Zoom.
3. The Study Session on May 22, 2024, 6:00 p.m., at the Santa Cruz County Office of Education, and will be broadcast to the public remotely via Zoom.
4. The Regular Board Meeting on May 29, 2024, 6:30 p.m., at the Santa Cruz County Office of Education, and will be broadcast to the public remotely via Zoom.
5. The Regular Board Meeting on June 12, 2024, 6:30 p.m., at the Santa Cruz County Office of Education, and will be broadcast to the public remotely via Zoom.

SANTA CRUZ CITY SCHOOL DISTRICT

AGENDA ITEM: Miyamoto International Change Order #1 to Feasibility Study

MEETING DATE: April 10, 2024

FROM: Jim Monreal, Assistant Superintendent, Business Services

THROUGH: Kris Munro, Superintendent

RECOMMENDATION:

Approve Miyamoto International change order #1 to feasibility study.

BACKGROUND:

This change order consists of additional structural engineering services to provide a supplemental report to address any hidden structural conditions that may exist. The District will work directly with a contractor to do the structure cut outs required for the engineer to make their assessments. The District previously engaged Miyamoto for a structural engineering study tied to the property purchase at 1304-1313 Seabright avenue. The previously approved contract amount was \$16,000.00 and the new total contract, including this change order, will be \$31,000.00.

FISCAL IMPACT:

Change Order #1 \$15,000.00 (93.75% increase to the contract), State Facilities Reimbursement Funds (Restricted)

This work is in direct support of the following District goals and their corresponding metrics:

Goal #2: SCCS will create positive, engaging school environments that promote the development of cognitive skills and the social-emotional well-being of all students.

Goal #5: SCCS will maintain a balanced budget and efficient and effective management.

Goal #6: SCCS will maintain strong communication and partnership with its diverse community.

Prepared by Trevor Miller, Director, Facility Services

April 2, 2024

Mr. Jimmy Monreal
Assistant Superintendent, Business Services
Santa Cruz City Schools
133 Mission Street, Suite 100
Santa Cruz, CA 95060
jmonreal@sccs.net

**Subject: Proposal for Additional Structural Engineering Services related to
1307 Seabright Ave Structural Assessment
Santa Cruz, CA
MI2413022.00**

Dear Mr. Monreal:

Supplemental to our previous Agreement for the above-referenced project, dated March 6, 2024, Miyamoto International, Inc. ("Miyamoto") is pleased to submit this proposal to Santa Cruz City Schools ("Client") to add the scope, as follows:

- a. Develop investigation scope of work, describing further investigations and intrusive access provisions (i.e. finish removal, excavation, etc.) to be provided by others
- b. Perform one site visit to review additional exposed conditions
- c. Perform an ASCE/SEI tier 2 structural evaluation of the buildings to review potential structural deficiencies identified during the tier 1 screening
- d. Update our previous letter report, documenting our observations and commenting on feasibility of structural upgrades to place the building in compliance with current code, and describing conceptual seismic retrofit and structural repair approaches for the purpose of contributing to a rough order of magnitude construction cost estimate

We propose to provide these services on a time and materials basis with a revised limit of \$31,000.00 (net increase of \$15,000.00), which we shall not exceed without prior authorization. Our services will be billed monthly as services are rendered.


If you agree to the above, please send a signed copy of this agreement to Miyamoto International, Inc., as notice to proceed.

We appreciate the opportunity to work with you. The conditions of this proposal shall be applicable for 90 days from the date of this proposal, after which Miyamoto reserves the right to review and/or negotiate them with the Client.

Best regards,
Miyamoto International, Inc.



Josh Reynolds, S.E.
Principal



Robert Luemers, P.E.
Associate

I, the Client, agree to the above terms:

Signature Date

Name

Title

Client Purchase Order or Project Number

Billing Contact Name

Billing Contact Email Address

Billing Contact Phone Number

RL/rl
Chauvel CE/SE13848, S4777 / Determan S4654 / Li C66333 / Miyamoto S4187 / Reynolds S5637

Mezzanine:

- 1) Expose the mezzanine framing and connection to the wall.
- 2) Document size and spacing of framing.
- 3) Document type and spacing of connection to wall.
- 4) Determine embed of anchor bolts into wall.
- 5) Document thickness and nailing of mezzanine sheathing to framing.

Roof:

- 1) Document / sketch typical roof truss configuration & member sizes & connections/plates between members.
- 2) Document thickness and nailing of roof sheathing to framing.

Wall anchorage:

- 1) Fully expose the roof truss connection to the wall.
- 2) Measure the diameters of through-bolts and anchor bolts.
- 3) Determine the anchor bolt embed.

Building geometry:
Measure height from grade to top of mezzanine framing, top of wall, and top of roof framing.

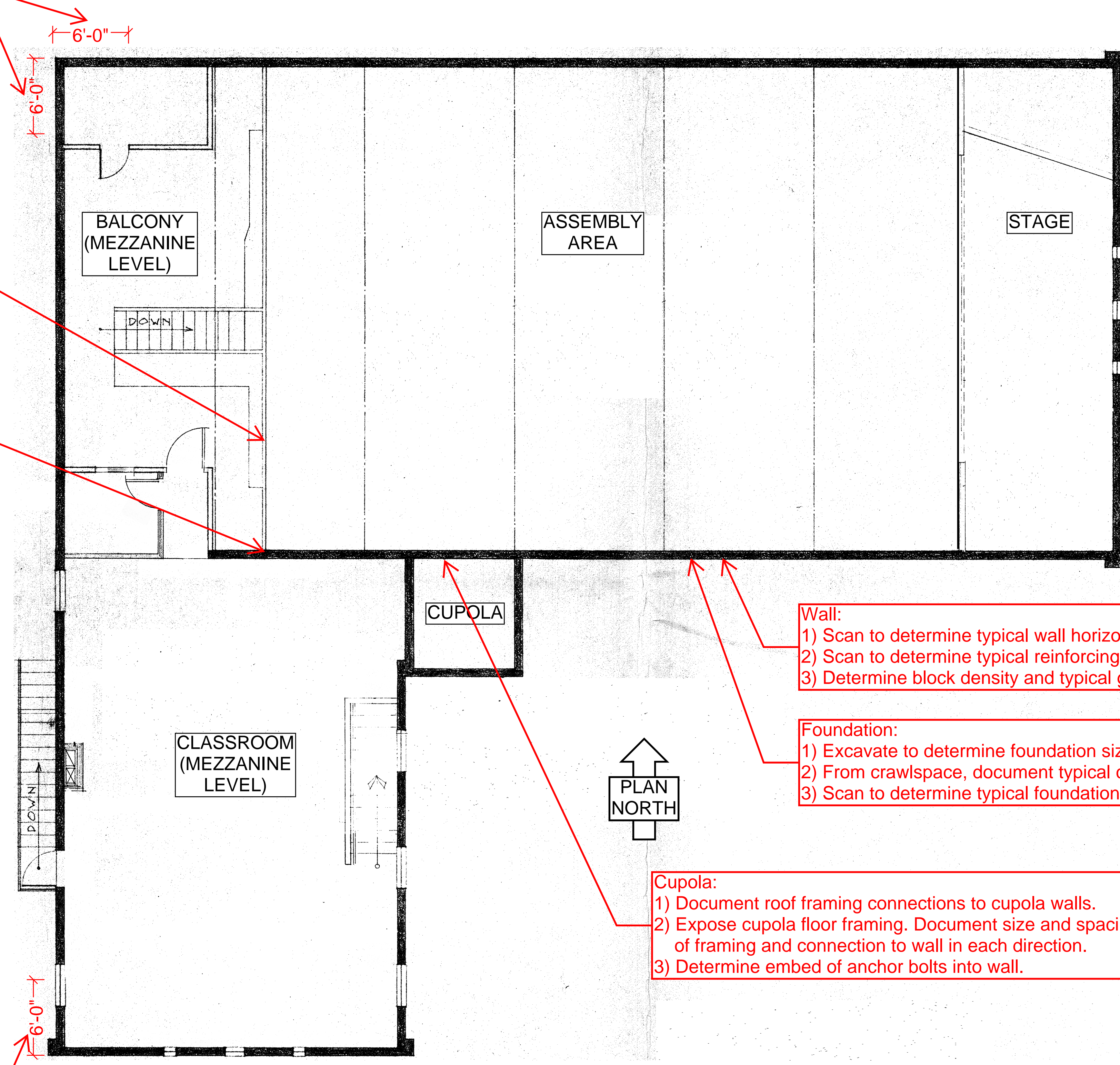
Geotechnical:

- 1) Review potential site hazards, such as liquefaction and surface fault rupture.
- 2) Determine allowable soil bearing capacities.

Note: This investigation would be needed for a design project. However, based on our current understanding of site conditions, it is unlikely to impact retrofit cost/design.

Mezzanine:

- 1) Expose the mezzanine framing and connection to the wall.
- 2) Document size and spacing of framing.
- 3) Document type and spacing of connection to wall.
- 4) Scan to determine embed of anchor bolts into wall.
- 5) Document thickness and nailing of mezzanine sheathing to framing.



Wall:

- 1) Scan to determine typical wall horizontal and vertical reinforcing size and spacing.
- 2) Scan to determine typical reinforcing size, spacing, and length of embed into foundation.
- 3) Determine block density and typical grouting (i.e., fully grouted, grouted at 16"oc, etc.).

Foundation:

- 1) Excavate to determine foundation size.
- 2) From crawlspace, document typical connection of subfloor framing to foundation.
- 3) Scan to determine typical foundation horizontal and vertical reinforcing size and spacing.

Cupola:

- 1) Document roof framing connections to cupola walls.
- 2) Expose cupola floor framing. Document size and spacing of framing and connection to wall in each direction.
- 3) Determine embed of anchor bolts into wall.

miyamoto.	1307 Seabright Ave Investigation Scope of Work	
	PROJ #: M12413022.00 DATE: 04/05/24 SCALE: NTS BY: RL	SK-001
<small>3150 Almaden Expressway, Suite 150 T: (408) 513-1999 San Jose, CA 95118 miyamotointernational.com</small>		